

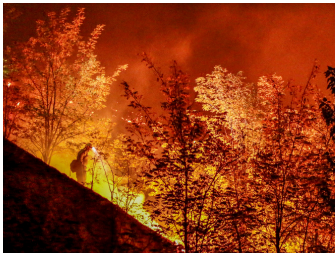


JOIN THE EAGLE FIRE DEPARTMENT

YOUR CAREER PATH STARTS HERE!

OCTOBER 1, 2025 – NOVEMBER 30, 2025

🔥 CAREER DEPARTMENT 🔥 STRUCTURAL FIREFIGHTING 🔥 EMERGENCY MEDICAL SERVICES
🔥 TECHNICAL RESCUE 🔥 PROMOTIONAL OPPORTUNITIES



EMT LICENSE

Obtain a National Registry EMT Basic (B) or higher Certification, or State EMT (B) License, or State of Idaho EMT (B) License.

For information on State of Idaho requirements please visit:

healthandwelfare.idaho.gov/bcu



WRITTEN EXAM & APPLICATION

- Create an account with Public Safety Answers <https://www.publicsafetyanswers.com/eagle>
- Complete application, resume, video interview, and recruit entrance exam in the above link.



PHYSICAL FITNESS TEST & ORAL INTERVIEW

The top candidates will be invited to participate in our Physical Fitness Test. Those that pass the fitness test will move to an oral interview.



RECRUIT ACADEMY START

Once a candidate successfully completes all hiring criteria, recruit academy will start. Proposed academy start date Spring 2026



VISIT OUR WEBSITE TO APPLY



